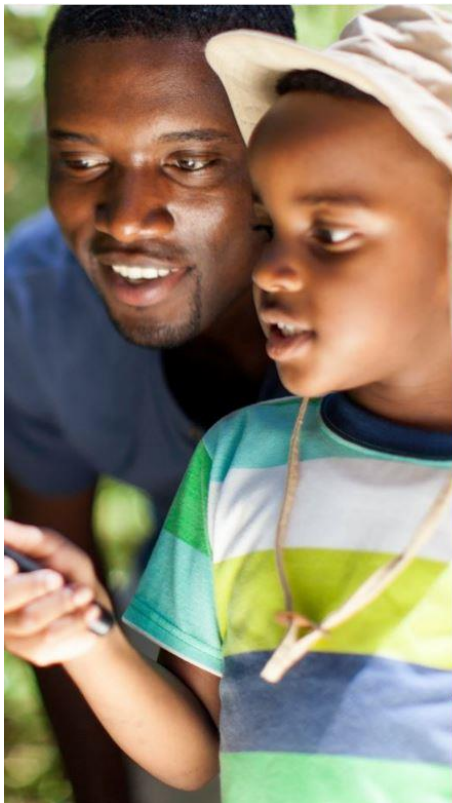


Statement of Income and Expenses 2017

lc  **supports foundation**®
supporting the world



LC Supports Foundation
Hoogeveeneweg 150
2913 LV Nieuwerkerk a/d IJssel
Nederland
lcsupportsfoundation.com
lcsupports@lcpackaging.com

Dear reader,

In this document we outline our balance sheet and statement of income and expenses for the financial year 2017.

On behalf of the committee of the LC Supports Foundation:

B. van Fraassen, chairman

Introduction.

The LC Supports Foundation is an independent charitable foundation, founded in 2016 by LC Packaging International B.V. To ensure continuity its projects, the LC Supports Foundation receives an annual donation of €25,000 from LC Packaging International B.V.

Statement of income and expenses

Statement of income and expenses by 31 December 2017

	2017	
Income	€25,000	LC Packaging International B.V.
Total Income	€25,000	
Expenses	€5,000	Donation Srilankan Hope for Children
	€5,000	Donation UNHCR – Rohingya Crisis
	€4,827.90	Tree-nation Project Burkina Faso
	€0	Travel Expenses
Total Expenses	€14,827.90	
Balance 31/12/2017	€10,172.10	

Committee.

The committee for the LC Supports Foundation consists of:

- Two committee members A: senior management of LC Packaging
- Two committee members B: LC Packaging employees

The LC Supports Foundation committee is as follows:

Boudewijn van Fraassen: Chairman
 Lucas Lammers: Treasurer
 Thabile Zuma: Secretary
 Lotte Mastwijk: Member

As former Secretary Renee Everaert has left LC Packaging, she automatically resigned her position in the LC Supports Foundation.

Projects.

In 2017 the LC Supports Foundation has supported three projects and has made preparations for a project, expected to start in January 2018.

Srilankan Hope for Children

The Dutch foundation Srilankan Hope for Children is committed to helping schools and homes improve their livelihoods by investing in educational facilities of their children, building secure shelters and provide them with resources to help improve their literacy and provide recreational activities.

The LC Supports Foundation decided to support Srilankan Hope For Children by donating €5,000 euros in 2017. In 2017 the LC Supports Foundation has funded the following initiatives:

- School trips for the Udugoda Junior School.
- Playground equipments such as hammock chairs, slides and a climbing rack for the Meegamma School as well as the Kingima playground.
- Computers, teaching materials, furniture and toys
- Transportation between the children their home and school (activities)

UNHCR – Rohingya Crisis

Since August 2017, it has been estimated that approximately 622,000 refugees have fled to Bangladesh. UNHCR, the UN Refugee Agency, is a global organization dedicated to saving lives, protecting human rights and building a better future for refugees, forcibly displaced communities and stateless people. UNHCR is leading the emergency response in Bangladesh and has teams on the ground right now providing life-saving aid to refugees.

In November 2017, LC Supports Foundation has donated €5,000 for this crisis

Tree-nation Plant for the Planet

LC Packaging's operations have an impact on the environment. Yearly we are responsible for approx. 6,000,000 Kg CO2 emissions. Via the tree-nation platform the LC Supports Foundation is supporting a tree planting project named 'Planter pour la Planète' (Plant for the Planet) in Dassa, Burkina Faso.

Next to CO2 compensation, this project helps to: Improve the local agricultural and forestry practices, protect the soil and forest, avoid land degradation and deforestation, create alternative sources of medicines and nutrition and increase land productivity.

As LC Packaging is serving customers in Burkina Faso and is locally increasingly present. In 2017 we have donated 1,752 trees, compensating 371.46t CO2 emissions.

Please check out our [Company Forest](#).